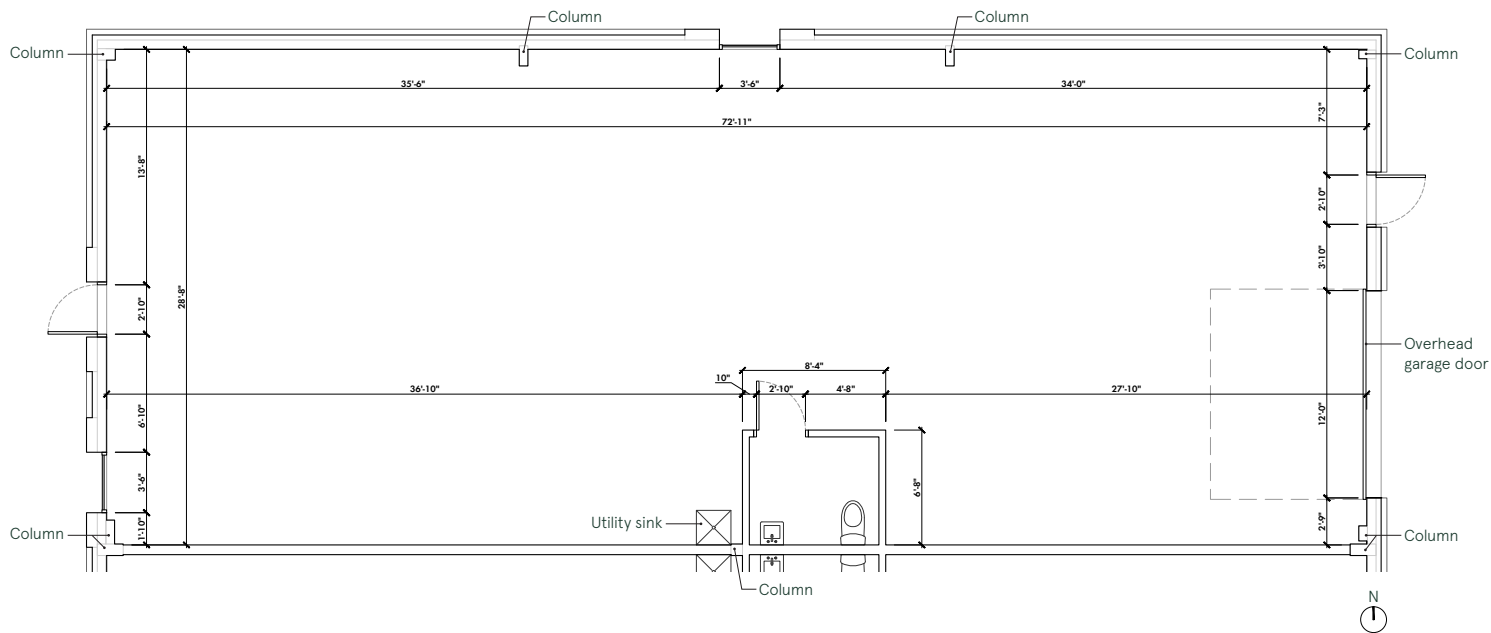
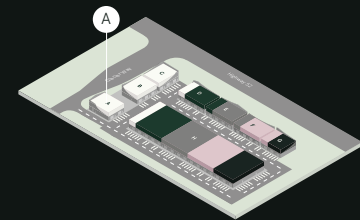


Glacier Way facing
Typical Unit Plan A2
60' x 75' (4,500sf)
sub-units of 30' x 75'
(2,250sf)

- + Optional 225ft mezzanine addition per bay
- + Individual gas, electric & water meters per bay
- + 200amp 3 phase electrical service per bay
- + 26ft high ceilings
- + Assigned parking
- + 10ft x 12ft overhead doors per bay



3D Plan



- A – Glacier way facing
- B – Glacier way facing
- C – Glacier way facing
- D – Highway 52 facing
- E – Highway 52 facing
- F – Highway 52 facing
- G – Highway 52 facing
- H – Central Building

Buildings features

